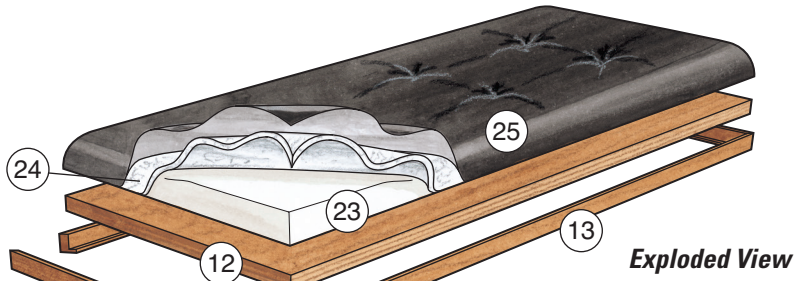
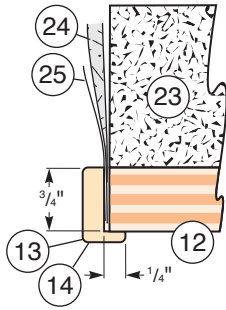


**Lid Assembly**

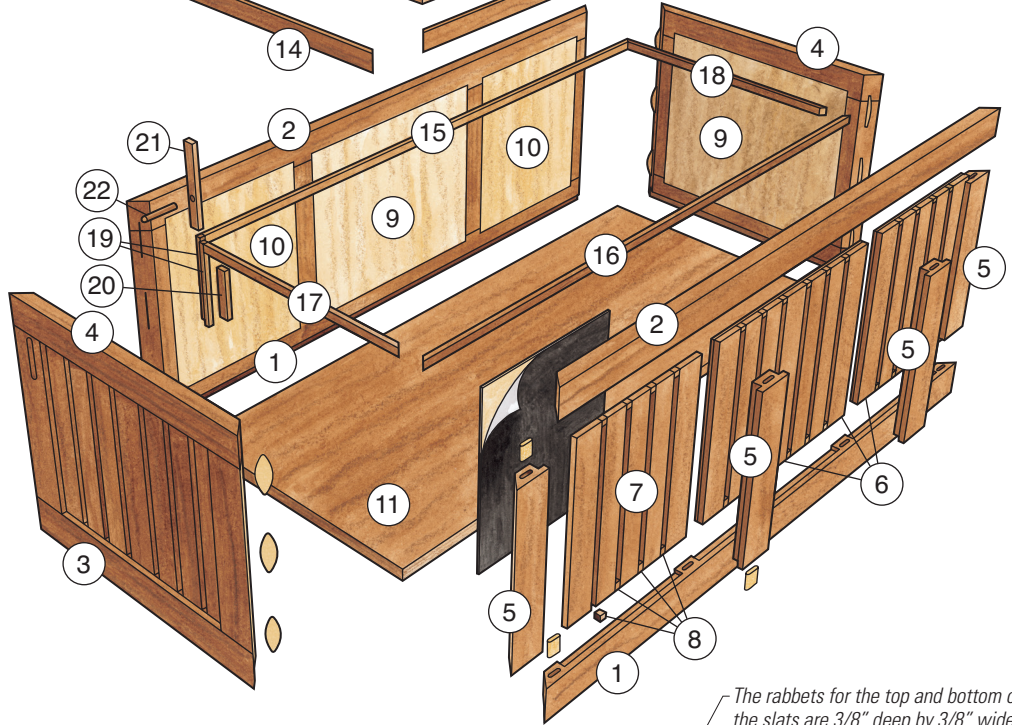
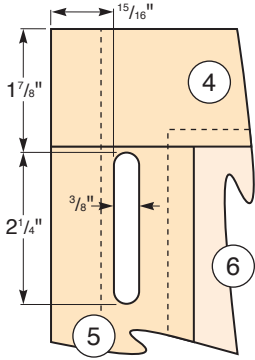
(Section View)



**Exploded View**

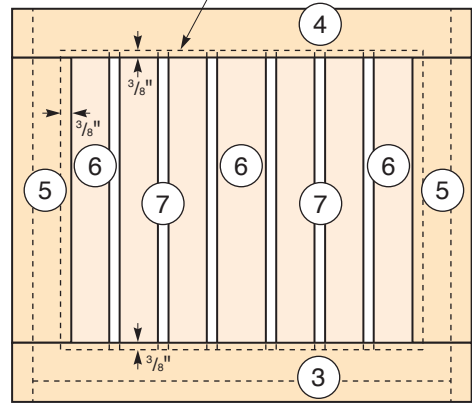
**Lid Lifter Slot Location**

(Front View)



The rabbets for the top and bottom of the slats are 3/8" deep by 3/8" wide.

**End Assembly**



**Front Assembly**

The rabbet for the wide slats is 3/8" deep by 3/8" wide.

The rabbet for the bottom is 1/2" deep by 3/4" wide.

