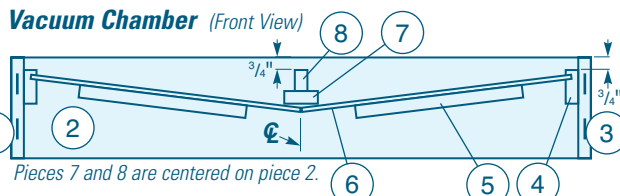
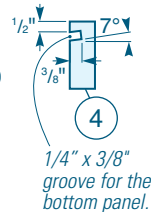


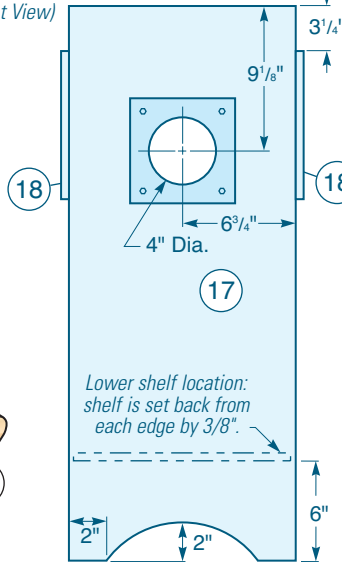
Exploded View



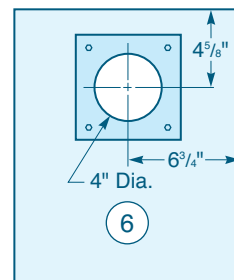
End Cleat (End View)



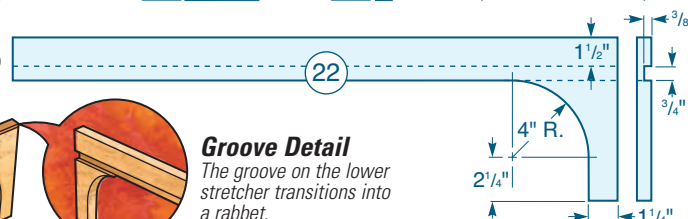
Tall End Panel (Front View)



Bottom Panel (Bottom View)



Lower Stretcher (Front and End Views)



Groove Detail

The groove on the lower stretcher transitions into a rabbet.

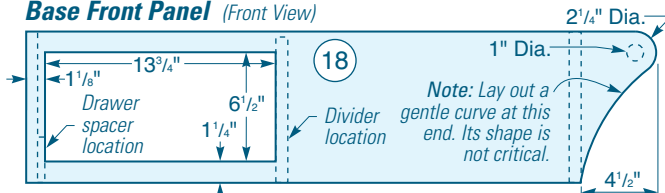
Setback Detail

$3/8"$ setback accommodates rabbet and groove on lower stretcher.

Back (Back View)

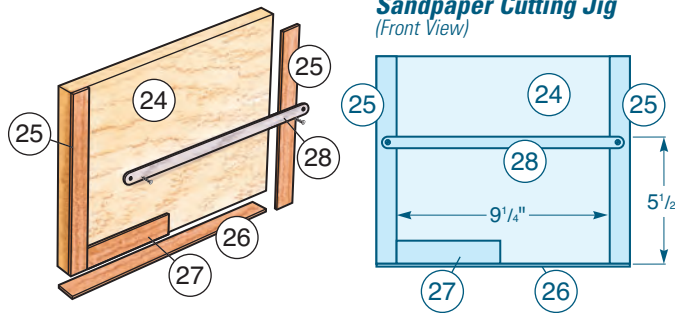


Base Front Panel (Front View)

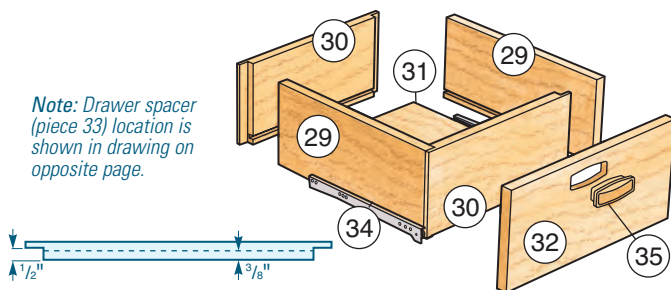


Note: The drawer spacer and divider are flush to the drawer opening.

Sandpaper Cutting Jig (Front View)



Note: Drawer spacer (piece 33) location is shown in drawing on opposite page.



Drawer Front and Back (Front View)

