

**Exploded View**

## MATERIAL LIST

	<b>T x W x L</b>		<b>T x W x L</b>
<b>1</b> Top Side Rails (2)	3/4" x 3 3/8" x 9 7/8"	<b>12</b> Upper Stretcher (1)	7/16" x 2 3/8" x 34"
<b>2</b> Bottom Side Rails (2)	3/4" x 3 3/8" x 9 7/8"	<b>13</b> Front & Back Veneer (2)	1/16" x 2 3/8" x 34"
<b>3</b> Side Stiles (4)	3/4" x 1 3/4" x 32 7/8"	<b>14</b> Lower Stretcher (1)	1/2" x 3/4" x 34"
<b>4</b> Side Panels (2)	1/2" x 9 1/4" x 26 7/8"	<b>15</b> Back Slats (9)	1/2" x 4" x 32 1/4"
<b>5</b> Frame Short Cleats (2)	3/4" x 1" x 9"	<b>16</b> Top (1)	3/4" x 13 1/4" x 37 1/2"
<b>6</b> Frame Long Cleats (2)	3/4" x 1" x 33 1/4"	<b>17</b> Side Trim Moldings (2)	5/8" x 5/8" x 12 5/8"
<b>7</b> Bottom (1)	3/4" x 12" x 34"	<b>18</b> Front Trim Molding (1)	5/8" x 5/8" x 36"
<b>8</b> Bottom Stringers (2)	1 3/8" x 2 7/8" x 10 1/2"	<b>19</b> Shelf (1)	3/4" x 10 3/4" x 33 3/4"
<b>9</b> Bottom Stretchers (2)	3/4" x 2 7/8" x 34 3/4"	<b>20</b> Shelf Stiffener (1)	3/4" x 1 1/2" x 33 3/4"
<b>10</b> Side Base Moldings (2)	1 1/2" x 3" x 13 1/2"	<b>21</b> Bun Feet (4)	Osborne #4045
<b>11</b> Front Base Molding (1)	1 1/2" x 3" x 37 1/4"	<b>22</b> Low Profile Shelf Support (4)	Rockler #22286

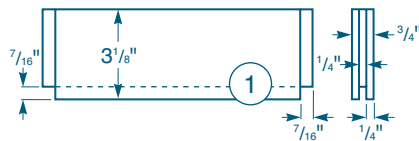
## Back Slat Assembly

(Top View)



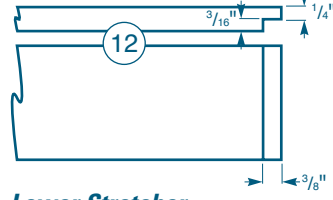
### Top Side Rail

(Front and End Views)



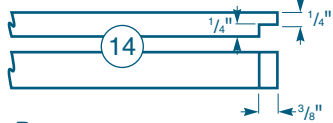
### Upper Stretcher

(Top and Front Views)



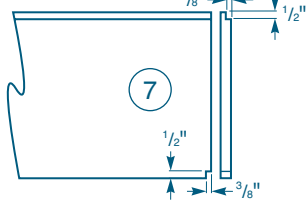
### Lower Stretcher

(Top and Front Views)



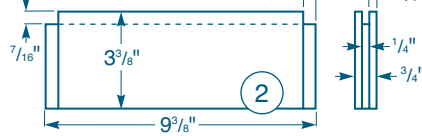
### Bottom

(Top and End Views)



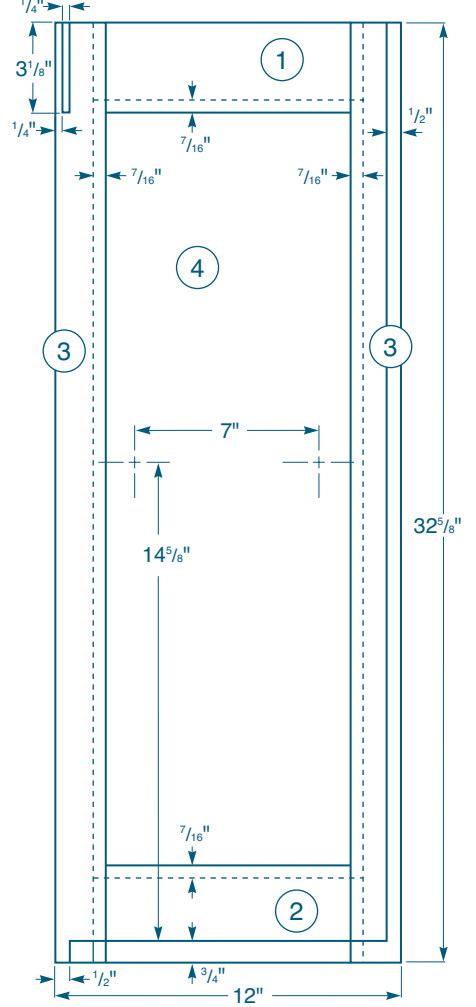
### Bottom Side Rail

(Front and End Views)



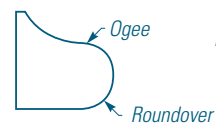
### Side Panel Assembly

(Inside View)



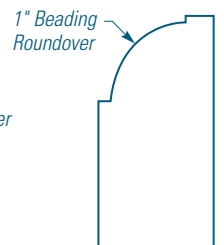
### Trim Molding

(End View)



### Base Molding

(End View)



### Shelf

(Front View)

